

CEA(N)-CA(N) SERIES

STAINLESS STEEL THREADED CENTRIFUGAL PUMPS

Wide range of pumps for domestic and industrial applications.

Single-impeller (CEA) and dual-impeller (CA) models available.

- ☐ **IN THE AISI 304 STANDARD VERSION ALL COMPONENTS IN CONTACT WITH THE PUMPED LIQUID ARE MADE OF STAINLESS STEEL (AISI 304 OR AISI 316), WHILE IN THE "N" VERSION (AISI 316) ARE IN AISI 316 STAINLESS STEEL**
- ☐ **IP 55 MOTOR PROTECTION**

APPLICATIONS

AISI 304 STANDARD VERSION

- **Handling of liquids compatible with AISI 304 stainless steel in a wide variety of civil and industrial systems.**
- Water circulation for domestic use.
- Sprinkler systems.
- Composition of surge tank units for pressure boosting in various applications.

"N" VERSION MADE OF AISI 316 (FOR AGGRESSIVE LIQUIDS)

- Reverse osmosis (where demineralized water is used).
- Industrial washing.
- Thermal waters.
- Chlorine dispensing in swimming pools.
- Jewellery industry.
- Wine production.

SPECIFICATIONS

- **Single-impeller CEA series, dual-impeller CA series.**
- **Delivery:** up to **31 m³/h.**
- **Head:** up to **62 m.**
- **Maximum operating pressure: 8 bar.**
- **Continuous duty.**
- **Temperature of pumped liquid: -10°C to 85°C (special CEA-V CA-V version, with O-ring or FPM seals, is available for temperatures up to +110°C).**
- Enclosed motor with external ventilation and aluminium alloy finned casing.
- Versions:
 - **Single-phase** 220-240 V 50 Hz, permanently connected capacitor and built-in automatic reset overload protection up to 1,5 kW.



Three-phase 220-240/380-415 V 50 Hz, overload protection to be provided by user (except for 2,2 kW version).

- Power up to 3 kW.
- **Class F Insulation.**
- **IP 55 protection.**

TABLE OF MATERIALS

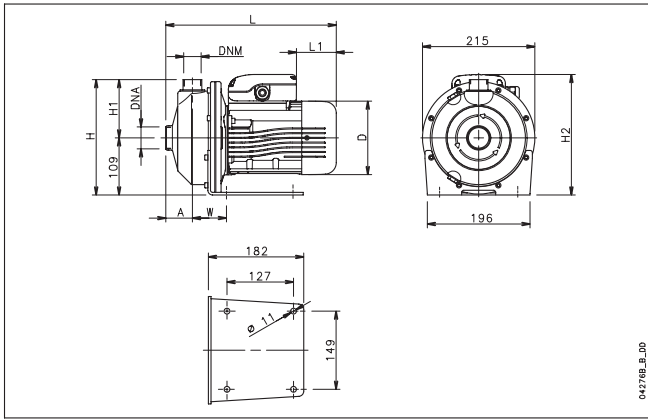
CEA-CA

PART	MATERIAL
Pump body, Flange, Seal housing, Diffuser, Impeller	STAINLESS STEEL (AISI 304 - DIN 1.4301)
Shaft extension	STAINLESS STEEL (AISI 316 - DIN 1.4401)
Fill and drain plugs	STAINLESS STEEL (AISI 316 - DIN 1.4401)
Mechanical seal	CARBON/CERAMIC/NBR
O-ring seals	NBR

CEA(N)-CA(N)

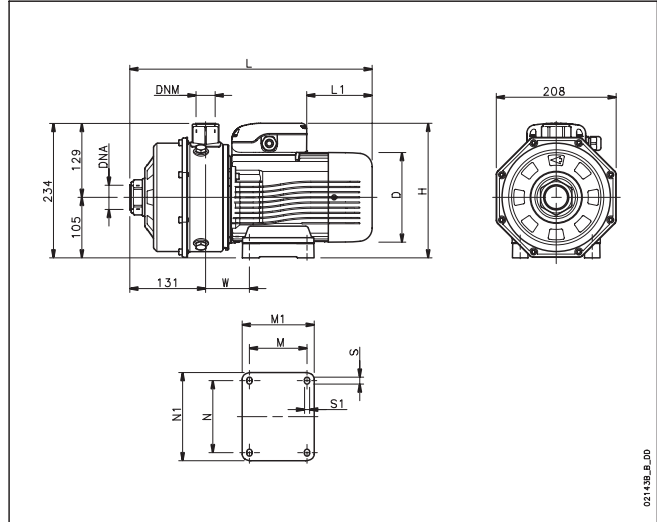
PART	MATERIAL
Pump body, Flange, Seal housing, Diffuser, Impeller	STAINLESS STEEL (AISI 316L - DIN 1.4404)
Shaft extension	STAINLESS STEEL (AISI 316 - DIN 1.4401)
Fill and drain plugs	STAINLESS STEEL (AISI 316 - DIN 1.4401)
Mechanical seal	CARBON/CERAMIC/EPDM
O-ring seals	EPDM

CEA-CEA(N) SERIES DIMENSIONS AND WEIGHTS



PUMP TYPE	DIMENSIONS (mm)								DNA	DNM	WEIGHT kg
	A	D	H	H1	H2	L	L1	W			
CEAM 70/3	51	120	220	111	220	311	62	65	Rp 1/4	Rp 1	9,7
CEAM 70/5	51	140	220	111	230	325	76	65	Rp 1/4	Rp 1	11,6
CEAM 80/5	51	140	220	111	230	325	76	65	Rp 1/4	Rp 1	12,5
CEAM 120/3	51	140	220	111	230	325	76	65	Rp 1/4	Rp 1	11,5
CEAM 120/5	51	140	220	111	239	325	31	65	Rp 1/4	Rp 1	13
CEAM 210/2	54	140	222	113	230	339	76	76	Rp 1/2	Rp 1/4	13
CEAM 210/3	54	156	222	113	246	385	69	76	Rp 1/2	Rp 1/4	14,5
CEAM 210/4	54	156	222	113	246	385	69	76	Rp 1/2	Rp 1/4	16,1
CEAM 210/5	54	176	222	113	230	416	114	76	Rp 1/2	Rp 1/4	14,4
CEAM 370/1	54	156	222	113	246	385	69	76	Rp 2	Rp 1/4	14
CEAM 370/2	54	156	222	113	246	385	69	76	Rp 2	Rp 1/4	16,1
CEAM 370/3	54	176	222	113	230	416	114	76	Rp 2	Rp 1/4	17,7
CEA 70/3	51	120	220	111	220	311	62	65	Rp 1/4	Rp 1	9,7
CEA 70/5	51	140	220	111	230	325	76	65	Rp 1/4	Rp 1	11,6
CEA 80/5	51	140	220	111	230	325	76	65	Rp 1/4	Rp 1	12,5
CEA 120/3	51	140	220	111	230	325	76	65	Rp 1/4	Rp 1	11,5
CEA 120/5	51	140	220	111	230	325	76	65	Rp 1/4	Rp 1	13
CEA 210/2	54	140	222	113	230	339	76	76	Rp 1/2	Rp 1/4	13
CEA 210/3	54	156	222	113	238	385	114	76	Rp 1/2	Rp 1/4	14,5
CEA 210/4	54	156	222	113	238	385	114	76	Rp 1/2	Rp 1/4	16,1
CEA 210/5	54	156	222	113	238	385	114	76	Rp 1/2	Rp 1/4	14,4
CEA 370/1	54	156	222	113	238	385	114	76	Rp 2	Rp 1/4	14
CEA 370/2	54	156	222	113	238	385	114	76	Rp 2	Rp 1/4	16,1
CEA 370/3	54	156	222	113	238	385	114	76	Rp 2	Rp 1/4	17,7
CEA 370/5	54	176	222	113	230	416	149	76	Rp 2	Rp 1/4	18

CA-CA(N) SERIES DIMENSIONS AND WEIGHTS



PUMP TYPE	DIMENSIONS (mm)											DNA	DNM	WEIGHT kg
	D	H	L	L1	M	M1	N	N1	S	S1	W			
CAM 70/33	140	226	383	76	90	113	112	135	12	7	66	Rp 1/4	Rp 1	15
CAM 70/34	140	235	383	31	90	113	112	135	12	7	66	Rp 1/4	Rp 1	15,8
CAM 70/45	156	242	420	69	100	125	125	153	12	9	76	Rp 1/4	Rp 1	18,5
CAM 120/33	156	242	420	69	100	125	125	153	12	9	76	Rp 1/4	Rp 1	18,4
CAM 120/35	156	242	420	69	100	125	125	153	12	9	76	Rp 1/4	Rp 1	20,2
CAM 120/55	176	226	450	114	125	156	140	170	13	9	98	Rp 1/2	Rp 1	24,5
CAM 200/33	176	226	450	114	125	156	140	170	13	9	98	Rp 1/2	Rp 1	24,2
CA 70/33	140	226	383	76	90	113	112	135	12	7	66	Rp 1/4	Rp 1	14,9
CA 70/34	140	226	383	76	90	113	112	135	12	7	66	Rp 1/4	Rp 1	15,7
CA 70/45	156	234	420	114	100	125	125	153	12	9	76	Rp 1/4	Rp 1	17
CA 120/33	156	234	420	114	100	125	125	153	12	9	76	Rp 1/4	Rp 1	16,8
CA 120/35	156	234	420	114	100	125	125	153	12	9	76	Rp 1/4	Rp 1	18,7
CA 120/55	156	234	420	114	100	125	125	153	12	9	76	Rp 1/4	Rp 1	20,3
CA 200/33	156	234	420	114	100	125	125	153	12	9	76	Rp 1/2	Rp 1	20
CA 200/35	176	226	450	149	125	156	140	170	13	9	98	Rp 1/2	Rp 1	22,3
CA 200/55	176	226	450	149	125	156	140	170	13	9	98	Rp 1/2	Rp 1	24,3

CEA-CEA(N) SERIES OPERATING CHARACTERISTICS AT 2850 rpm 50 Hz

PUMP TYPE	RATED POWER		Q = DELIVERY																
	kW	HP	m³/h																
			0	30	40	60	80	100	120	140	160	180	200	250	300	350	400	430	480
CEA(M) 70/3	0,37	0,5	22	20	19,1	16,6	12,8												
CEA(M) 70/5	0,55	0,75	31,1	28,8	27,4	24,7	20,2												
CEA(M) 80/5	0,75	1	32	30	29,3	27,4	24,7	21											
CEA(M) 120/3	0,55	0,75	22,4		18,9	17,5	15,9	14	11,8	9,2									
CEA(M) 120/5	0,9	1,2	31,8		28,2	26,5	24,6	22,4	20	17,3									
CEA(M) 210/2	0,75	1	17,7					16,5	16,1	15,6	15	14,4	12,6	10,4					
CEA(M) 210/3	1,1	1,5	20,8					19,7	19,3	19	18,5	18	16,5	14,4					
CEA(M) 210/4	1,5	2	25,5					24,8	24,5	24	23,6	23	21,3	19					
CEA(M) 210/5	1,85	2,5	29					28,2	27,9	27,5	27,1	26,6	25,1	23,1					
CEA(M) 370/1	1,1	1,5	16,3						15,5	15,2	14,3	13	11,4	9,4	8,1				
CEA(M) 370/2	1,5	2	20,4						19,1	18,3	17,2	15,8	14,1	13	10,8				
CEA(M) 370/3	1,85	2,5	24,4						22,9	22,1	21,1	19,8	18,2	17,1	15	13			
CEA370/5	3	4	30,4						28,3	27,5	26,5	25,3	23,8	22,8	21	18,9			

CA-CA(N) SERIES OPERATING CHARACTERISTICS AT 2850 rpm 50 Hz

PUMP TYPE	RATED POWER		Q = DELIVERY																
	kW	HP	m³/h																
			0	30	40	50	60	70	80	100	120	150	180	210					
CA(M) 70/33	0,75	1	42,9	38,8	36,9	34,6	31,7	28,2	23,9										
CA(M) 70/34	0,9	1,2	48,8	45,1	43,2	40,7	37,7	34,0	29,5										
CA(M) 70/45	1,1	1,5	56,2	52,0	49,8	47,1	43,9	39,9	35,3										
CA(M) 120/33	1,1	1,5	44,3			39,1	37,8	36,4	34,8	31,4	27,6	21,0							
CA(M) 120/35	1,5	2	54,0			49,4	48,1	46,6	44,9	41,2	36,8	29,3							
CA(M) 120/55	2,2	3	63,8			59,6	58,2	56,6	54,8	50,6	45,7	37,1							
CA(M) 200/33	1,85	2,5	43,2			41,8	41,2	40,6	39,9	38,3	36,4	33,2	29,5	25,5					
CA 200/35	2,2	3	53,5			52,4	51,9	51,4	50,7	49,2	47,5	44,3	40,6	36,5					
CA 200/55	3	4	62,6			61,0	60,6	60,1	59,5	58,2	56,6	53,8	50,4	46,2					

PUMP TYPE	INPUT POWER*	INPUT CURRENT*	CAPACITOR
CEAM 70/3	0,6	2,72	14
CEAM 70/5	0,97	4,55	16
CEAM 80/5	1,07	4,87	20
CEAM 120/3	0,91	4,33	16
CEAM 120/5	1,39	6,24	25
CEAM 210/2	1,13	5,1	20
CEAM 210/3	1,48	6,68	30
CEAM 210/4	1,91	8,6	40
CEAM 210/5	2,31	10,6	50
CEAM 370/1	1,49	6,75	30
CEAM 370/2	2,05	9,26	40
CEAM 370/3	2,47	11,2	50

PUMP TYPE	INPUT POWER*	INPUT CURRENT*	INPUT CURRENT*
CEA 70/3	0,61	2,51	1,45
CEA 70/5	0,88	2,86	1,65
CEA 80/5	1,06	3,65	2,11
CEA 120/3	0,82	2,74	1,58
CEA 120/5	1,32	4,52	2,61
CEA 210/2	1,12	3,76	2,17
CEA 210/3	1,43	4,68	2,7
CEA 210/4	1,84	6,04	3,49
CEA 210/5	2,28	8,35	4,82
CEA 370/1	1,44	4,71	2,72
CEA 370/2	1,99	6,32	3,65
CEA 370/3	2,47	8,63	4,98
CEA 370/5	3,34	9,93	5,74

PUMP TYPE	INPUT POWER*	INPUT CURRENT*	CAPACITOR
CAM 70/33	1,15	5,16	20
CAM 70/34	1,39	6,22	25
CAM 70/45	1,76	7,92	30
CAM 120/33	1,67	7,53	30
CAM 120/35	2,18	9,87	40
CAM 120/55	2,61	11,7	50
CAM 200/33	2,36	10,8	50

PUMP TYPE	INPUT POWER*	INPUT CURRENT*	INPUT CURRENT*
CA 70/33	1,14	3,78	2,18
CA 70/34	1,32	4,52	2,61
CA 70/45	1,71	5,23	3,02
CA 120/33	1,62	5,06	2,92
CA 120/35	2,13	6,58	3,8
CA 120/55	2,62	8,89	5,13
CA 200/33	2,34	9,44	4,87
CA 200/35	3,14	9,18	5,3
CA 200/55	3,68	10,9	6,3

*Maximum value in specified range

cea-2p50_b_tit

*Maximum value in specified range

ca-2p50_a_tit



36075 Montecchio Maggiore - Vicenza - Italy
Tel. 0444/707111 - Fax 0444/492166 - <http://www.lowara.com>

Lowara



Hoogeindsestraat 5
NL - 5447 PD Rijkevoort
T: +31 (0)485 - 371318
F: +31 (0)485 - 371918
info@pompentechniek.nl
www.pompentechniek.nl